

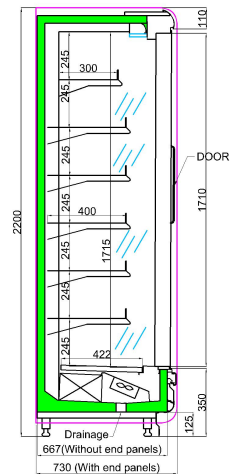
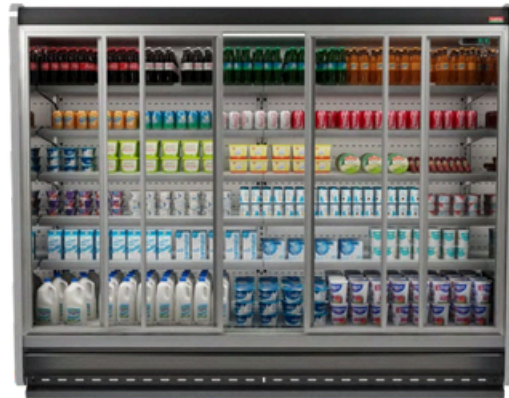
PARISA 70 H:220 CM WITH SLIDING DOOR REMOTE



Technical Specifications



PARISA-SD Model remote multi-deck chillers provide rich and functional solutions to the users with their modular double-glazed sliding doors. Glass doors and environment friendly equipment save energy and protect your budget. Side panels have injected polyurethane and thickness is 40 mm. Also PARISA-SD model has 42 kg/m³ density polyurethane injected body. Also there is undershelf LED option for PARISA-SD model which shows inside the chillers brighter.



| | | | | | | | |
|--------------------------------|--|----------------------------|--------|-------|--------|-------|--------|
| MODEL SIZE (INTERNAL) (MM) | | 937 | 1250 | 1875 | 2500 | 2812 | 3750 |
| MODEL SIZE (EXTERNAL) (MM) | | 1017 | 1330 | 1955 | 2580 | 2892 | 3830 |
| COOLING CAPACITY (WATT) | TEMP.CLASS: 3H1/3H2(GROCERY&BOTTLE COOLER) | 1131 | 1475 | 2213 | 2950 | 3318 | 4425 |
| | TEMP.CLASS: 3M2 (DIARY) | 1410 | 1763 | 2644 | 3525 | 3965 | 5288 |
| | TEMP.CLASS: 3M1 (MEAT) | 1490 | 1863 | 2794 | 3725 | 4190 | 5588 |
| DOOR NUMBERS (PCS) | | 2 | 2 | 3 | 4 | 4 | 6 |
| DISPLAY AREA (M ²) | | 1,57 | 2,09 | 3,14 | 4,19 | 4,71 | 6,29 |
| VOLUME (M ³) | | 0,86 | 1,15 | 1,73 | 2,30 | 2,59 | 3,46 |
| LIGHTING (WATT) | | 9 | 18 | 27 | 36 | 36 | 54 |
| EVAPORATOR FAN NUMBER&WATT | | 1X38 | 2X38 | 3X38 | 4X38 | 4X38 | 6X38 |
| SHELVES LENGTH (PER LINE) (MM) | | 1x937 | 1x1250 | 2x937 | 2x1250 | 3x937 | 3x1250 |
| SHELVES DEPTH | | 1x300mm + 5x400mm | | | | | |
| SHELVES WEIGH CAPACITY | | 160 KG / M ² | | | | | |
| BASE WEIGHT CAPACITY | | 200 KG / M ² | | | | | |
| NO OF ROW (INCLUDING BASE) | | 7 | | | | | |
| AMBIENT CONDITION | | @+25°C / 60 % RH | | | | | |
| DIGITAL CONTROLLER | | ELIWELL ID SERIES / DIXELL | | | | | |
| SOLENOID VALVE (OPTIONAL) | | DANFOSS / OLAB / SANHUA | | | | | |
| EXPANSION VALVE | | DANFOSS | | | | | |

www.coldco.com

